

doux curl



SAFETY

SAFETY Co., Ltd.

TEL +81-3-6426-6700

URL <http://www.safety-co.jp>

@safety.co_ltd



Line up



doux curl H1
Cosmetics.
Cysteamine + Thioglycolic Acid.
(For Healthy Hair and Normal Hair.)
1st Liquid. 400ml



doux curl N1
Cosmetics.
Cysteamine + Cysteine.
(For Damaged Hair.)
1st Liquid. 400ml



doux curl S1
Cosmetics.
Cysteamine.
(For Highly Damaged Hair.)
1st Liquid. 400ml



doux curl Jell H1
Cosmetics.
Cysteamine + Thioglycolic Acid.
(For Healthy Hair and Normal Hair.)
1st Liquid. 400ml



doux curl Fixer2
Cosmetics.
2nd Liquid. 400ml



doux treatment
Creep buffer
Cosmetics.
Intermediate Treatment Agent.
1000ml



doux treatment
Protect oil cream
Cosmetics.
Pre-treatment and Post-treatment Agent.
400g



doux treatment
Protect oil cream
For dedicated Hard Case 150g.

doux curl

bouncy × moisture



Product Guide

SAFETY
SINCE 1930

Bounce × Moisture × doux curl



Hair make : Liike
Photo : Yusuke Matsuyama

Formulated with two types of collagen and three botanical oils,
it expresses curls that are full of moisture and resilient right to the tips.

Also suitable for those who want to enjoy color and curl styles simultaneously.
Even for those worried about potential damage to their hair from perming.
Curling while providing ample moisture to the hair.

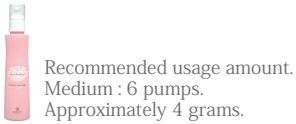
Assists elasticity, ensuring smoothness and lasting beauty.
High-performance cosmetic curling product based on cysteamine.

doux curl PROCESS

01/ Consultation. Conduct a hair diagnosis and select the appropriate chemicals based on the level of damage.

02/ Pre-shampoo.

03/ Pre-treatment. Apply protective oil cream to damaged areas as needed.



Recommended usage amount.
Medium : 6 pumps.
Approximately 4 grams.

04/ Winding. Rod selection : Please choose standard rods.

05/ Apply H1/N1/S1/JellH1. *Refer to the corresponding table.



Recommended usage amount.
Medium: 80ml.

06/ Leave on. Recommended leave-on time: 5-15 minutes.

07/ Intermediate rinse.

08/ Intermediate treatment. Apply creep buffer.
*For enhanced deodorizing and creeping effects, leave on for 5 minutes.



Recommended usage amount.
Medium: 40ml.

09/ Apply Fixer2 in two separate applications. Recommended leave-on time: 10-20 minutes.



10/ Plain rinse.

11/ Post-treatment. Apply protective oil cream as needed and rinse.



Recommended usage amount.
Medium : 6 pumps.
Approximately 4 grams.

12/ Finishing.

Damage level and chemical selection chart.

Damage Level.	0	1	2	3	4	5
Hair Condition.	Healthy.	Floating starts to appear at the tips of the cuticle, but there is minimal effluent of intercellular substances.	Damage begins to appear on the cuticle, with cracks and fine chipped areas at the tips, and effluent of intercellular substances has started.	There are many chipped areas at the tips of the cuticle, and intercellular substances are partially effluent.	The missing areas of the cuticle have become larger, with intense effluent of intercellular substances and partial cavitation.	The cuticle is significantly damaged, with effluent of intercellular substances and cavitation.
Visual & tactile examination.	Shine, moisture, and weight with elasticity.	Slightly reduced shine but retains weight and elasticity.	Shine is somewhat reduced, beginning to dry out. There is still elasticity, and no sticking when wet.	Drying worsens, causing roughness on the surface. Shine is lost, elasticity diminishes, and sticking occurs when wet.	Hair is dry with no shine, loss of elasticity, and weightlessness. It feels rough when dry and stretches when pulled when wet.	Hair is dry with no shine, elasticity, and lightweight. It may appear whitish or translucent. When pulled dry, it breaks, and when wet, it becomes stiff and tangled.

Coarse to normal hair.	H/JellH		N		S
Fine hair.	N			S	

01

Double Collagen + Three Plant Oils.

Raw Collagen.

With a triple helix structure, it adheres near the cuticle. It has approximately four times the moisture absorption and three times the moisturizing power compared to regular collagen, protecting the cuticle from external stressors while maintaining moisture.

Hydrolyzed Collagen.

It adheres to damaged parts of the hair for repair and protection. It penetrates the CMC (cell membrane complex) to increase strength and elasticity.

fragrance

A fruity floral scent that masks the unique odor of cysteamine. Contains sugar cane extract, green tea extract, and orange oil to significantly reduce the odor during treatment.

Argan Oil. Shine.

Oil extracted from the seeds of the argan tree, which inhabits the deserts of Morocco. Rich in vitamin E, it adds shine to the hair.

Baobab Seed Oil. Moisturizing.

Oil from the seeds of the baobab tree, known as the "tree of life" in Senegal. It contains moisturizing oleic acid, repairing the cuticle and providing moisture.

Meadowfoam Oil. Texture.

Oil extracted from meadowfoam seeds. It forms a cushiony film, resulting in smooth and soft curls.

02

doux curl's unique reduction-oxidation effect.

H1 • JellH1

Cysteamine + Thioglycolic Acid.

Both cysteamine and thioglycolic acid penetrate deeply, creating resilient and defined curls.

【Lotion and Gel Types】



N1

Cysteamine + Cysteine.

Cysteamine penetrates deeply, while cysteine penetrates the outer layer of the hair. This combination creates smooth and soft curls.



S1

Cysteamine.

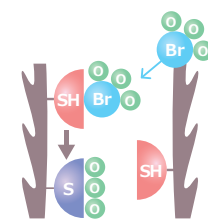
Cysteamine penetrates deeply, creating curls while minimizing damage with a low pH formula.



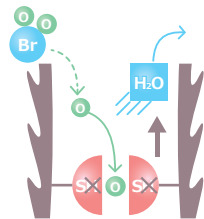
Fixer2

Excessive oxidation by the two liquids can generate cysteic acid, resulting in decreased hair strength and poor texture. Fixer2 slowly absorbs oxygen, inhibiting cysteic acid production, maintaining the hair's natural elasticity and moisturizing power, and firmly fixing the curls.

Oxygen.
 Cysteine.
 Cysteic Acid.
 Bromic Acid Salts.



Excessive oxidation.



Proper oxidation by Fixer2.

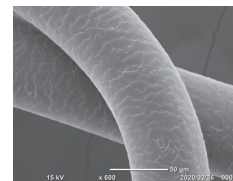
03

Creating curls with low swelling.

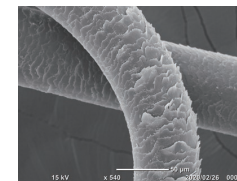
doux curl is a low-swelling cosmetic perm that minimizes damage while creating curls.

Comparison under the same conditions as conventional thioglycolic acid.

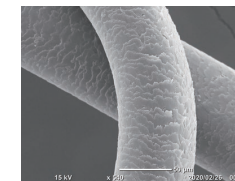
1 Liquid for 15 minutes → Intermediate rinse (without intermediate treatment) → 2 Liquids for 7 minutes each.



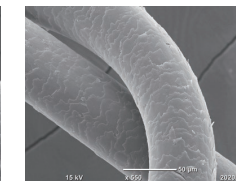
Hair after coloring.



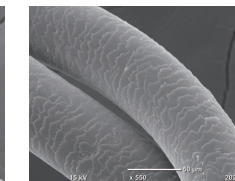
Thioglycolic Acid Perm.



doux curl H1



doux curl N1



doux curl S1

04

Further improve quality by using 1 and 2 liquids together.

Protect oil cream

Acidic treatment agent.

When used as a pre-treatment, it prevents excessive dryness and damage to the hair. When used as a post-treatment, it provides moisture and shine, making the hair smoother.

【Ingredients】Baobab Seed Oil, Argan Oil, Meadowfoam Oil, Jojoba Oil, Castor Oil, 18MEA, Keratin PPT, Collagen PPT, γ-Keratos, Raw Collagen.



Creep buffer

Intermediate treatment agent.

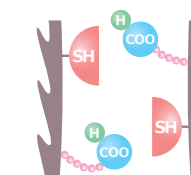
It creates resilient elasticity with three effects: creep, buffer, and deodorization. Even when dry, the hair is less prone to stretching, and the high deodorizing effect reduces post-perm odor.

【Ingredients】Amino Link, Mirabilis Fruit Extract, Keratin PPT, Collagen PPT, Raw Collagen, Sugar Cane Extract, Green Tea Extract, Orange Oil, Silver Ion.



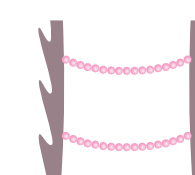
Contains Amino-Link.

When the cysteine residues are distant and lack centripetal force between them, the amino link containing glyoxylic acid (COOH) binds to the cysteine residues (SH), supplementing hair strength and creating cross-links. It inhibits cysteine residue formation, providing resilience and reducing stretching even when dry.



Binds to cysteine residues.

SH Cysteine.
 Amino-Link.



Forms pseudo-cross-linking to complement amino acid deficiencies.

05

Free expression of style with JellH1.

Stays firmly in desired areas, emphasizing curls. It allows for perms only on the roots, such as adding volume to the top or lifting bangs, expanding styling options for clients.

※Please use Protect Oil Cream to protect the ends of the hair.



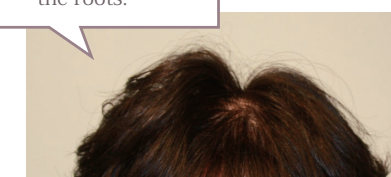
Easy-to-apply gel type.

JellH1



H1

Jell H1 on the left emphasizes curls at the roots.





Bound curl

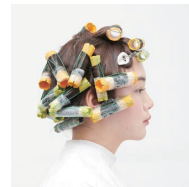
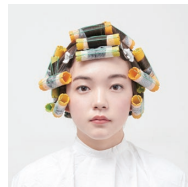
Bound curl

Cysteamine + Thioglycolic Acid.

Target Hair.

Healthy Hair.

Normal Hair.



doux curl H1



Rods Used.



23mm



20mm



17mm



14mm



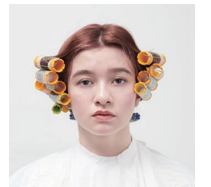
Slick curl

Slick curl

Cysteamine.

Target Hair.

Highly Damaged Hair.



doux curl S1



Rods Used.



23mm



20mm



17mm



15mm



14mm



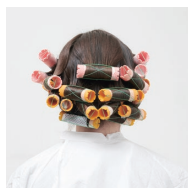
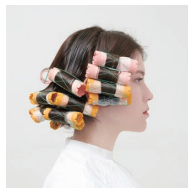
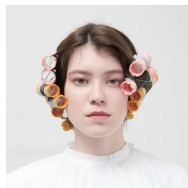
Airy curl

Airy curl

Cysteamine + Cysteine.

Target Hair.

Damaged Hair.



doux curl N1

Rods Used.



26mm



23mm



20mm



Edge curl

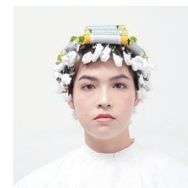
Edge curl

Cysteamine + Thioglycolic Acid.

Target Hair.

Healthy Hair.

Normal Hair.



doux curl jell H1

Rods Used.



20mm



17mm

Pin Perm.

